



HYDRAULICKÝ MOTOR SÉRIE BMP

Hydromotor série BMP je určený pre použitie do tlaku 160 bar.

Charakteristické vlastnosti:

- Tesnenie hriadeľa znesie vysoký tlak motora, ktorý sa môže používať paralelne alebo sériovo.
- Pokročilý konštrukčný dizajn, vysoký výkon a nízka hmotnosť.

Hlavná špecifikácia

Technické údaje pre BMP - 25 mm hriadeľ

Typ		BMP	BMP	BMP	BMP	BMP	BMP	BMP	BMP	BMP	BMP	
		BMPH BMPW 36	BMPH BMPW 50	BMPH BMPW 80	BMPH BMPW 100	BMPH BMPW 125	BMPH BMPW 160	BMPH BMPW 200	BMPH BMPW 250	BMPH BMPW 315	BMPH BMPW 400	BMPH BMPW 500
Geometrický posun (cm/rev.)		36	51.7	77.7	96.2	120.2	157.2	194.5	240.3	314.5	389.5	486.5
Max. rýchlosť (rpm)	cont.	1500	1150	770	615	490	383	310	250	192	155	120
	int.	1650	1450	960	770	615	475	385	310	240	190	150
	cont.	55	100	146	182	236	302	360	380	375	360	385
Max. krútiaci moment (N•m)	int.	76	128	186	227	290	370	440	460	555	525	560
	peak	96	148	218	264	360	434	540	550	650	680	680
	cont.	8.0	10.0	10.0	11.0	10.0	10.0	10.0	8.5	7.0	6.0	5.0
Max. výstup (kW)	int.	11.5	12.0	12.0	13.0	12.0	12.0	12.0	10.5	8.5	7.0	6.0
	cont.	12.5	14	14	14	14	14	14	11	9	7	6
Max. tlak drop (MPa)	int.	16.5	17.5	17.5	17.5	17.5	17.5	17.5	14	14	10.5	9
	peak	22.5	22.5	22.5	22.5	22.5	22.5	22.5	18	16	14	12
Max. prietok (Umin)	cont.	55	60	60	60	60	60	60	60	60	60	60
	int.	60	75	75	75	75	75	75	75	75	75	75
Hmotnosť (kg)		5.6	5.6	5.7	5.9	6.0	6.2	6.4	6.7	6.9	7.4	8

* Trvalý tlak: Maximálna hodnota trvalej prevádzky motora.

* Prerušovaný tlak: Maximálna hodnota prevádzkového motora za 6 sekúnd za minútu.

* Špičkový tlak: Max. hodnota prevádzkového motora za 0,6 sekundy za minútu.

Hlavná špecifikácia

Technické údaje pre BMP pre 32 mm hriadeľ

Typ		BMP 36	BMP 50	BMP 80	BMP 100	BMP 125	BMP 160	BMP 200	BMP 250	BMP 315	BMP 400	BMP 500
Geometrický posun (cm/rev.)		36	51.7	77.7	96.2	120.2	157.2	194.5	240.3	314.5	389.5	486.5
Max. rýchlosť (rpm)	cont.	1500	1150	770	615	490	383	310	250	192	155	120
	int.	1650	1450	960	770	615	475	385	310	240	190	150
Max. krútiaci moment (N•m)	cont.	55	100	146	182	236	302	360	460	475	490	430
	int.	76	128	186	227	290	370	440	570	555	580	560
	peak	96	148	218	264	360	434	540	670	840	840	780
Max. výstup (kW)	cont.	8.0	10.0	10.0	11.0	10.0	10.0	10.0	8.5	7.0	6.0	6.0
	int.	11.5	12.0	12.0	13.0	12.0	12.0	12.0	10.5	8.5	7.0	7.0
Max. tlak drop (MPa)	cont.	12.5	14	14	14	14	14	14	14	12	9.5	7
	int.	16.5	17.5	17.5	17.5	17.5	17.5	17.5	17.5	14	11.5	9
	peak	22.5	22.5	22.5	22.5	22.5	22.5	22.5	22.5	22.5	18	13
Max. prietok (U _{min})	cont.	55	60	60	60	60	60	60	60	60	60	60
	int.	60	75	75	75	75	75	75	75	75	75	75
Hmotnosť (kg)		5.6	5.6	5.7	5.9	6.0	6.2	6.4	6.7	6.9	7.4	8.0

* Trvalý tlak: Maximálna hodnota trvalej prevádzky motora.

* Prerušovaný tlak: Maximálna hodnota prevádzkového motora za 6 sekúnd za minútu.

* Špičkový tlak: Max. hodnota prevádzkového motora za 0,6 sekundy za minútu.

Údaje o výkone

BMP 36 [36 cm³/ot]
Tlak (MPa)

		Max.cont.							Max.int.		
		3	6	7	8	10	11	12.5	16.5		
Prietok (L/min)	8	13	25	29	34	43	48				
	15	13	25	29	34	43	48	56	75		
	20	13	24	29	34	43	48	56	76		
	30	12	24	29	34	43	48	56	76		
	35	12	23	28	34	43	48	56	76		
	40	12	23	28	32	41	47	55	75		
	45	11	22	26	32	41	46	54	74		
	Max.cont.	6	15	22	28	37	44	52	71		
Max.int.	3	11	18	20	30	38	49	67			
	8	13	25	29	34	43	48	56	75		
	15	406	398	391	383	374	366	353	324		
	20	541	534	528	521	513	500	486	458		
	30	814	804	792	778	763	749	726	701		
	35	952	944	930	913	897	879	858	833		
	40	1090	1078	1064	1048	1024	998	977	943		
	45	1232	1218	1196	1175	1149	1118	1080	1044		
	Max.cont.	1505	1494	1480	1466	1438	1406	1367	1309		
	Max.int.	1650	1640	1626	1603	1571	1536	1502	1446		

BMP 50 [51,7 cm³/ot]
Tlak (MPa)

		Max.cont.							Max.int.		
		3	6	8	10	12.5	14	16	17.5		
Prietok (L/min)	8	20	41	56	69	89	95				
	15	19	40	56	71	91	100	112	120		
	20	18	39	55	71	92	101	117	128		
	30	17	38	55	71	91	98	116	124		
	35	17	38	54	69	89	98	117	124		
	45	14	36	53	67	88	98	114	123		
	55	12	33	50	65	85	96	111	121		
	Max.cont.	10	32	47	64	83	94	108	119		
Max.int.	6	25	42	56	76	87	101	112			
	8	20	41	56	69	89	95				
	15	286	274	261	243	204	182	139	102		
	20	382	373	361	348	318	309	287	251		
	30	573	568	558	535	503	488	462	440		
	35	670	661	652	640	606	589	562	548		
	45	863	858	849	837	807	788	764	746		
	55	1055	1042	1028	1010	979	963	947	920		
	Max.cont.	1150	1143	1126	1111	1079	1065	1043	1015		
	Max.int.	1440	1430	1416	1395	1367	1351	1335	1312		

BMP 80 [77,7 cm³/ot]
Tlak (MPa)

		Max.cont.							Max.int.		
		3	6	8	10	12.5	14	16	17.5		
Prietok (L/min)	8	32	62	85	104	129	144				
	15	32	63	84	107	126	144	165			
	20	31	63	84	107	132	146	168	185		
	30	31	62	83	106	131	146	168	186		
	35	30	59	81	102	130	144	167	185		
	45	25	58	79	100	126	142	165	182		
	55	23	57	78	97	124	140	161	179		
	Max.cont.	20	53	75	94	120	137	160	177		
Max.int.	14	44	67	87	112	151	169	169			
	8	97	87	74	55	33	22				
	15	186	181	170	154	132	118	86			
	20	251	243	236	225	207	196	178	155		
	30	381	379	368	355	332	316	285	263		
	35	443	435	426	415	397	383	361	342		
	45	570	564	554	543	526	509	483	458		
	55	696	685	672	656	643	630	602	579		
	Max.cont.	761	753	744	736	720	706	681	660		
	Max.int.	948	940	931	920	906	890	871	854		

BMP 100 [96,2 cm³/ot]
Tlak (MPa)

		Max.cont.							Max.int.		
		3	6	8	10	12.5	14	16	17.5		
Prietok (L/min)	8	40	77	105	130	161	180				
	15	39	77	106	130	160	180	208			
	20	36	74	104	128	161	179	205	227		
	30	33	72	103	125	160	177	203	225		
	35	30	70	98	122	159	176	202	224		
	45	29	67	95	118	155	174	200	220		
	55	25	64	93	116	152	170	198	217		
	Max.cont.	22	60	91	114	149	167	194	213		
Max.int.	15	54	83	106	141	160	186	205			
	8	81	75	69	57	36	24				
	15	152	149	145	140	122	103	81			
	20	204	200	195	190	177	166	148	133		
	30	308	304	298	290	280	268	255	231		
	35	360	352	343	331	320	306	294	275		
	45	462	458	451	443	433	419	402	383		
	55	566	558	549	540	529	515	498	478		
	Max.cont.	618	611	601	589	580	570	558	540		
	Max.int.	771	763	755	744	735	724	708	693		

Krútiaci moment (N•m) 87
Rýchlosť (rpm) 920

cont.
int.

Údaje o výkone

BMP 125 [120,2 cm³/ot]

Tlak (MPa)

		Max.cont.							Max.int.		
		3	6	8	10	12,5	14	16	17,5		
Prietok (L/min)	8	51	98	137	168	208	236				
		63	60	55	47	28	15				
	15	51	101	138	168	209	236	267			
		121	116	110	102	89	73	48			
	20	48	98	135	167	211	237	269	290		
		162	158	153	148	137	128	109	94		
	30	46	96	132	164	209	232	264	287		
		243	239	234	227	216	202	189	176		
	35	42	92	130	160	206	229	260	284		
		284	279	274	269	259	247	231	222		
45	37	89	125	157	201	224	261	281			
	370	362	355	348	340	327	310	296			
55	33	84	122	152	196	218	252	275			
	452	446	438	431	420	412	402	384			
Max.cont.	60	29	78	117	146	191	215	248	272		
	490	482	475	468	459	448	439	427			
Max.int.	75	18	66	107	133	179	202	236	260		
	615	606	598	586	575	563	549	528			

BMP 160 [157,2 cm³/ot]

Tlak (MPa)

		Max.cont.							Max.int.		
		3	6	8	10	12,5	14	16	17,5		
Prietok (L/min)	8	62	120	170	212	263	290				
		49	48	46	42	26	14				
	15	60	122	172	215	264	294	340			
		93	91	88	85	76	68	48			
	20	57	120	170	214	262	290	340	371		
		125	123	120	117	110	106	92	81		
	30	53	115	164	206	259	288	335	368		
		187	184	181	178	175	168	155	139		
	35	49	110	160	202	255	284	328	362		
		220	216	213	209	205	202	192	176		
45	44	102	154	196	248	278	321	358			
	283	280	276	272	267	260	250	238			
55	40	99	148	191	243	272	316	351			
	345	342	340	336	331	328	320	303			
Max.cont.	60	33	94	144	188	236	267	308	345		
	377	374	371	367	363	359	353	342			
Max.int.	75	19	80	124	170	216	252	296	325		
	473	469	465	459	453	447	440	424			

BMP 200 [194,5 cm³/ot]

Tlak (MPa)

		Max.cont.							Max.int.		
		3	6	8	10	12,5	14	16	17,5		
Prietok (L/min)	8	79	164	207	250	320	360				
		40	39	38	35	28	22				
	15	78	162	205	250	322	361	410			
		76	75	74	71	66	61	51			
	20	76	158	203	247	320	358	403	422		
		100	98	97	95	92	89	73	57		
	30	70	153	200	245	315	350	398	417		
		151	149	147	145	142	139	131	120		
	35	66	149	194	232	297	343	386	415		
		177	175	173	171	168	166	160	149		
45	63	146	190	230	294	340	383	410			
	228	226	224	221	218	215	210	198			
55	54	140	181	224	286	334	371	400			
	280	278	276	274	271	269	263	250			
Max.cont.	60	38	127	164	212	270	325	356	395		
	304	302	300	297	294	291	286	272			
Max.int.	75	22	96	145	192	235	293	321	367		
	382	378	374	371	368	364	360	350			

BMP 250 [240,3 cm³/ot]

Tlak (MPa)

		Max.cont.							Max.int.		
		3	6	8	10	12,5	14	16	17,5		
Prietok (L/min)	8	96	190	268	326	403					
		30	28	24	21	11					
	15	98	194	270	327	405	450	510			
		60	58	54	50	40	30	12			
	20	92	188	267	325	405	456	514	565		
		82	80	77	76	69	64	52	38		
	30	85	180	259	320	400	448	513	561		
		123	120	118	114	106	98	87	76		
	35	77	176	252	311	389	436	504	557		
		143	141	139	135	128	122	112	101		
45	70	168	243	300	377	428	495	543			
	185	182	178	174	168	161	152	139			
55	63	159	237	290	369	417	483	531			
	226	223	218	213	209	202	193	185			
Max.cont.	60	60	150	228	280	358	407	473	520		
	248	246	243	239	233	226	215	207			
Max.int.	75	34	128	202	264	342	387	448	488		
	309	306	302	297	292	286	278	264			

□ cont.
■ int.

Krútiaci moment (N·m) 128
Rýchlosť (rpm) 306

Údaje o výkone

BMP 315 [314,5 cm³/ot]
 Tlak (MPa)

		3	5	7	9	10	12,5	14
Prietok (L/min)	8	123 25	215 23	292 21	368 17	405 11		
	15	118 47	211 46	287 44	367 40	404 28	495 21	568 10
	20	110 62	205 61	278 60	360 57	395 46	494 40	566 36
	30	101 94	196 93	271 91	349 88	388 76	490 68	565 65
	35	96 109	188 107	264 106	341 104	382 96	478 89	557 84
	45	89 141	180 140	254 138	337 135	372 127	468 120	553 115
	55	76 173	166 172	239 170	325 167	362 160	457 152	548 143
	Max.cont.	65 188	154 186	227 184	308 182	348 178	443 172	529 163
	Max.int.	40 236	120 234	201 232	279 228	323 226	418 223	497 214

BMP 400 [389,5 cm³/ot]
 Tlak (MPa)

		3	4,5	5,5	6,5	8	10	12,5
Prietok (L/min)	8	166 20	232 19	287 18	340 16	418 12		
	15	165 38	228 36	277 35	337 33	417 31	496 27	612 21
	20	162 50	223 49	273 49	331 48	413 45	495 41	608 35
	30	154 76	216 75	266 74	318 73	405 71	486 67	600 60
	35	146 88	210 87	256 87	312 86	395 83	480 80	588 75
	45	132 114	197 113	243 112	300 110	383 108	464 106	576 99
	55	117 139	184 137	227 136	283 135	363 135	450 132	552 123
	Max.cont.	102 153	163 152	215 150	272 148	347 146	436 143	532 138
	Max.int.	53 191	128 189	182 187	234 185	318 183	391 180	484 176

BMP 500 [486,5 cm³/ot]
 Tlak (MPa)

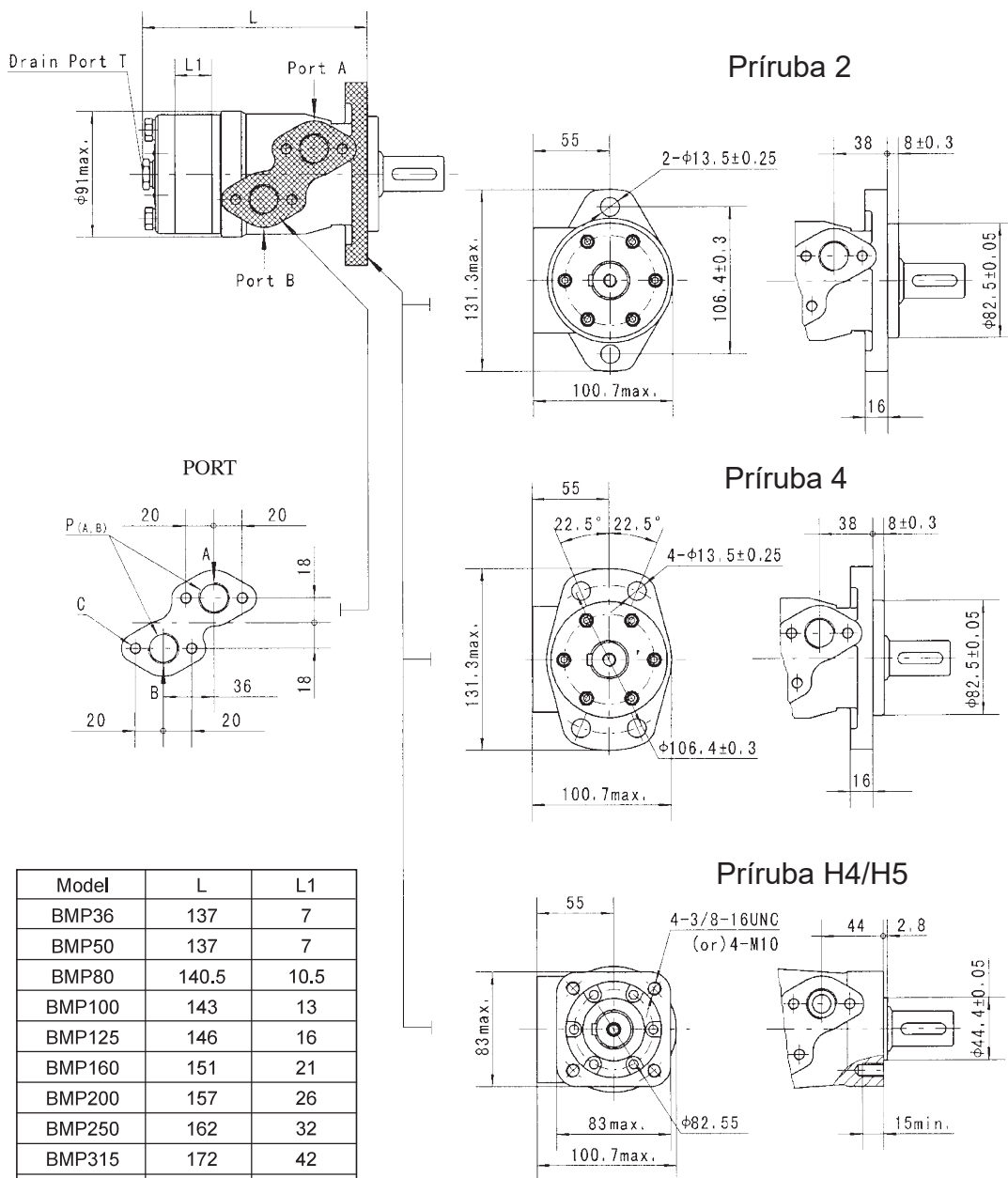
		1,5	3	4,5	6	7	8	9
Prietok (L/min)	4	96 7	194 6	285 4				
	8	98 15	201 15	304 14	391 14	443 12	512 9	574 7
	15	96 30	192 30	284 29	380 28	421 26	496 23	550 22
	20	96 40	191 40	280 40	372 39	418 37	493 33	546 31
	30	91 61	185 60	272 60	360 58	412 56	486 53	541 50
	40	86 81	172 80	261 80	343 79	408 76	480 73	538 70
	50	78 102	160 101	241 100	332 98	391 96	466 93	528 90
	Max.cont.	66 122	134 121	213 120	305 119	371 117	438 114	496 110
	70	52 143	111 142	189 141	292 139	344 137	418 135	475 131
	Max.int.	35 153	83 152	154 151	241 150	312 149	389 147	448 144

Krútiaci moment (N•m) 234
 Rýchlosť (rpm) 185

□ cont.
 ■ int.

Krútiaci moment (N•m) 389
 Rýchlosť (rpm) 147

Rozmery a montážne paramet

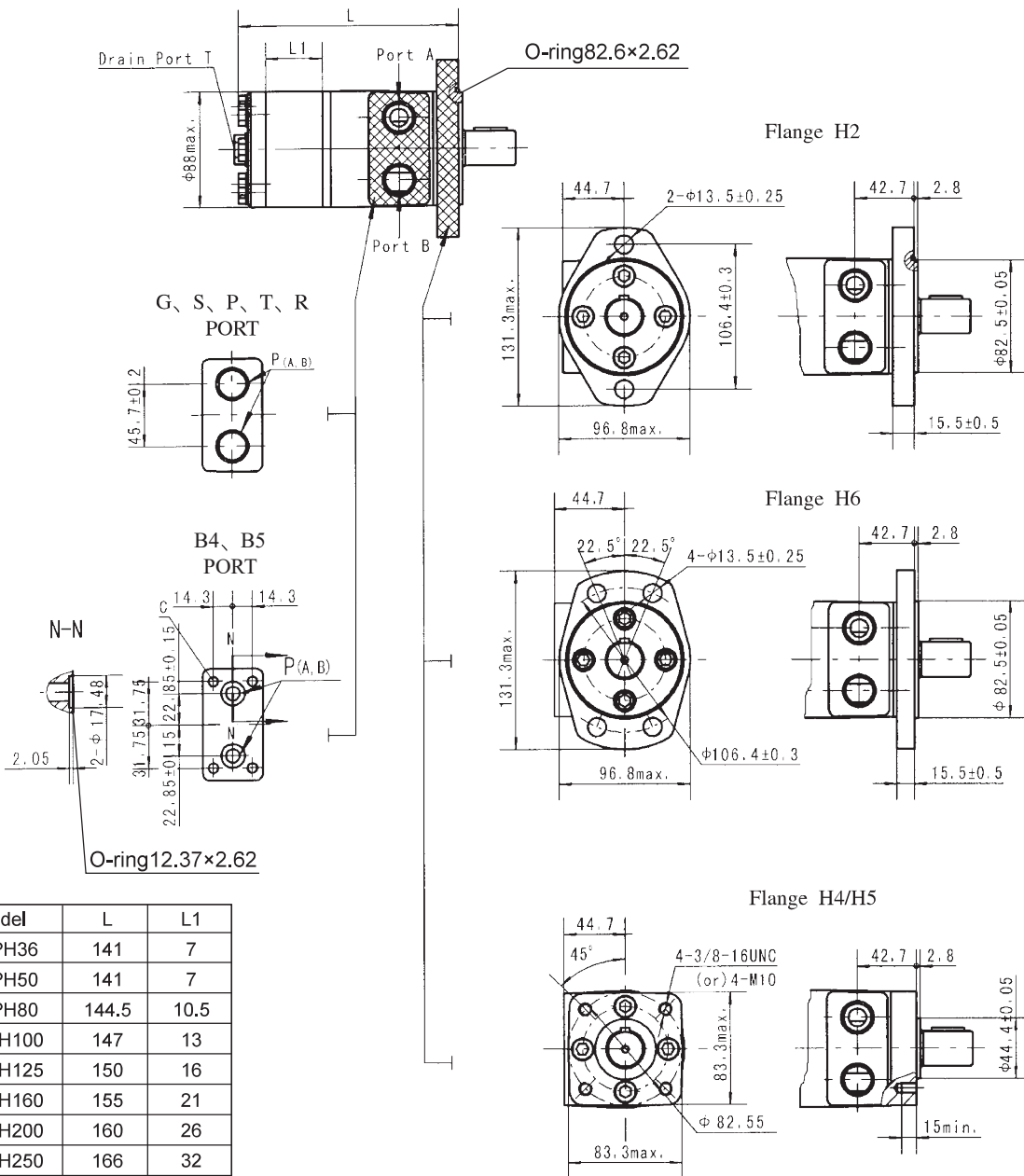


Model	L	L1
BMP36	137	7
BMP50	137	7
BMP80	140.5	10.5
BMP100	143	13
BMP125	146	16
BMP160	151	21
BMP200	157	26
BMP250	162	32
BMP315	172	42
BMP400	182	52
BMP500	195	65

or y	Kód	D	M	S	P	R
	P(A,B)	G1/2 (15)	M22 x 1.5 (15)	7/8-14 O-ring (17)	1/2-14NPTF (15)	PT(RC)1/2 (15)
	C	4-M8 (13)	4-M8 (13)	4-5/16-18UNC(13)	4-5/16-18UNC(13)	4-M8 (13)
	T	G1/4 (12)	M14 x 1.5 (12)	7/16-20UNF (12)	7/16-20UNF (12)	PT(RC)1/4 (9.7)



BMPH Rozmery a montážne parametre

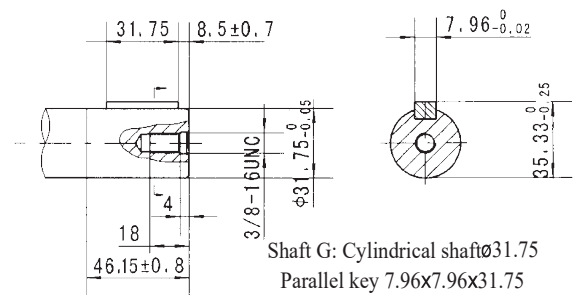
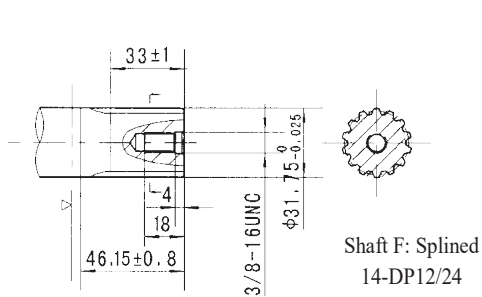
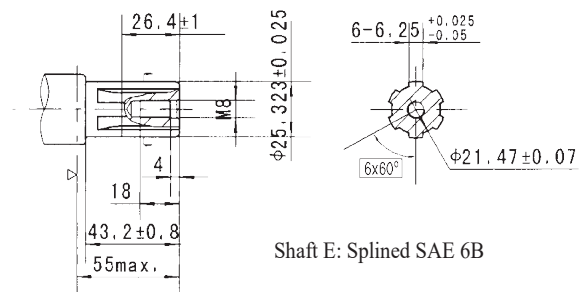
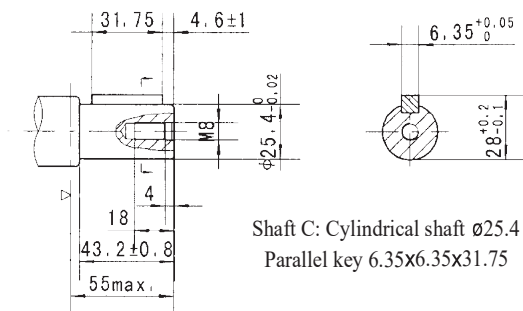
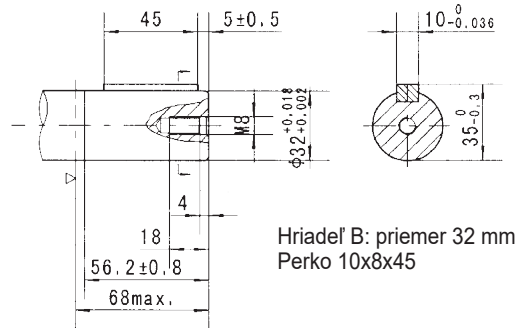
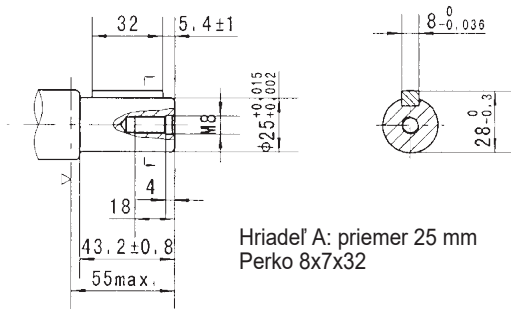


Model	L	L1
BMPH36	141	7
BMPH50	141	7
BMPH80	144.5	10.5
BMPH100	147	13
BMPH125	150	16
BMPH160	155	21
BMPH200	160	26
BMPH250	166	32
BMPH315	176	42
BMPH400	186	52
BMPH500	199	65

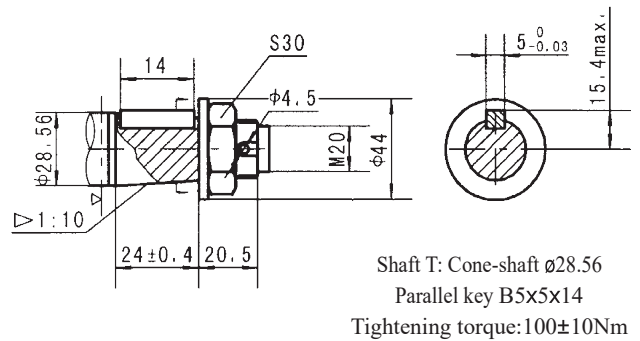
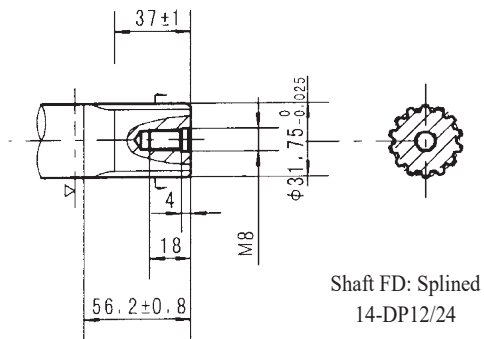
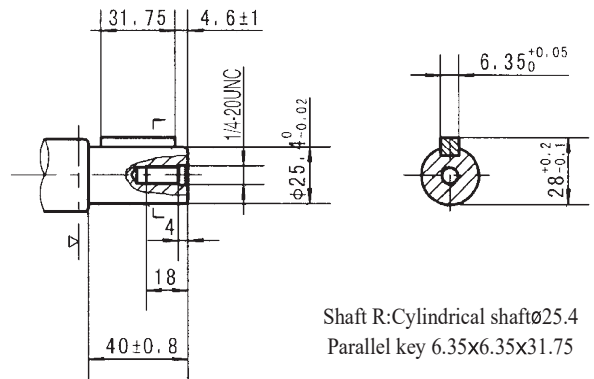
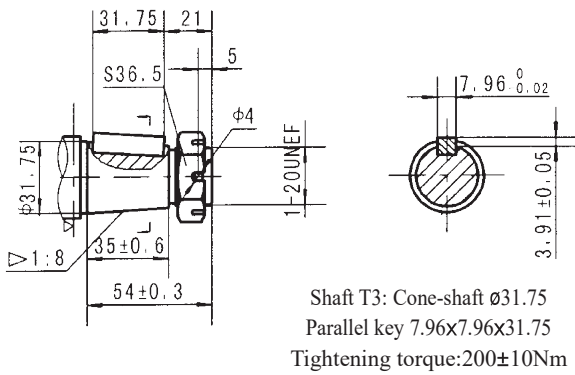
Note: The size L of the BMPH N1 should be increased by 2mm.

Montáž	Kód	G (híbka)	S (híbka)	P (híbka)	T (híbka)	R (híbka)	B4 (híbka)	B5 (híbka)
P(A,B)		G1/2 (15)	7/8-14 O-ring (17)	1/2-14NPTF (15)	3/4-16 O-ring (15)	PT(RC)1/2 (15)	ø10	ø10
T		G1/4 (12)	7/16-20UNF (12)	7/16-20UNF (12)	7/16-20UNF(12)	PT(RC)1/4 (9.7)	7/16-20UNF(12)	G1/4(12)
C		-	-	-	-	-	4-5/16-18UNC(13)	4-M8(13)

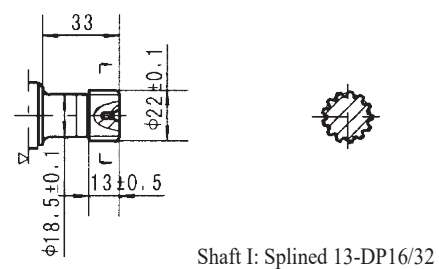
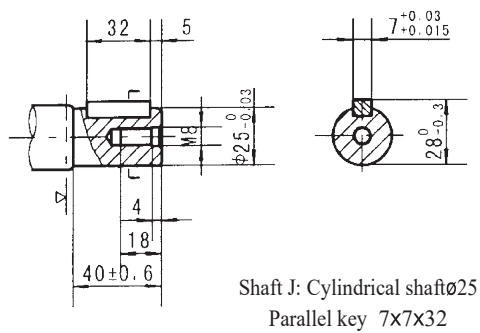
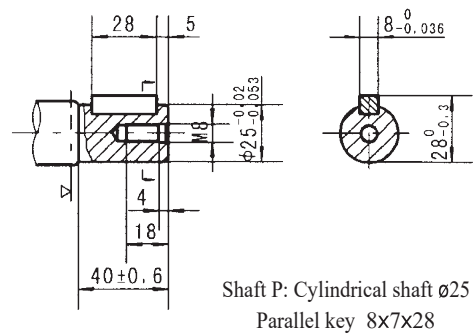
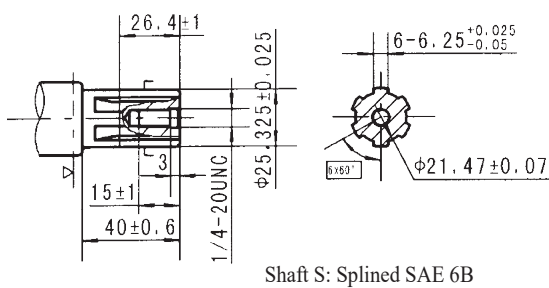
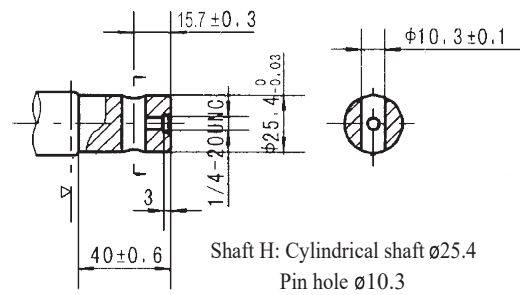
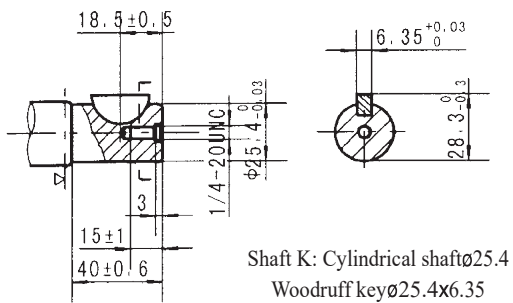
Druhy hriadel'ov B



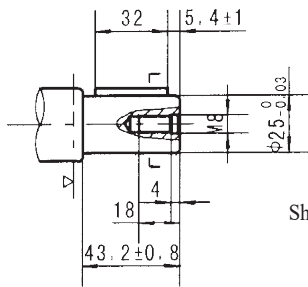
Druhy hriadel'ov B



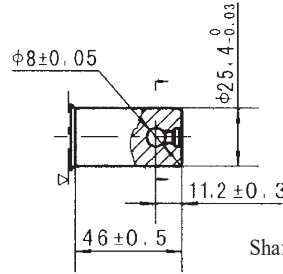
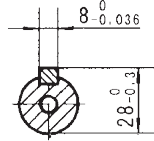
Druhy hriadel'ov B



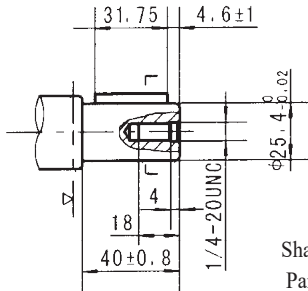
Druhy hriadel'ov B



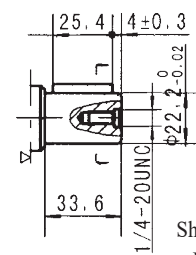
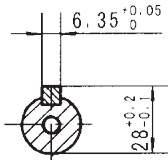
Shaft A: Cylindrical shaft $\varnothing 25$
 Parallel key 8x7x32



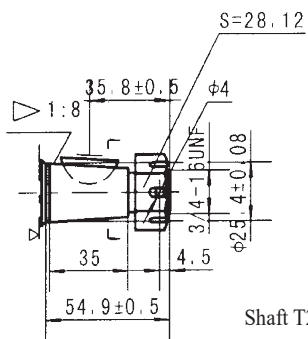
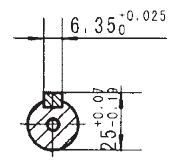
Shaft H1: Cylindrical shaft $\varnothing 25.4$
 Pin hole $\varnothing 8$



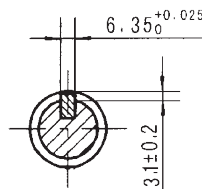
Shaft R: Cylindrical shaft $\varnothing 25.4$
 Parallel key 6.35x6.35x31.75



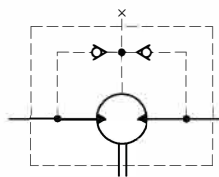
Shaft D: Cylindrical shaft $\varnothing 22.22$
 Parallel key 6.35x6.35x25.4



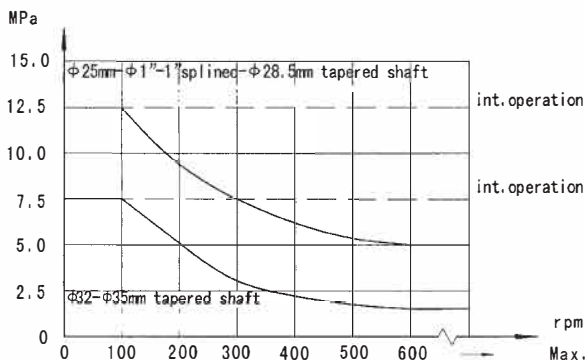
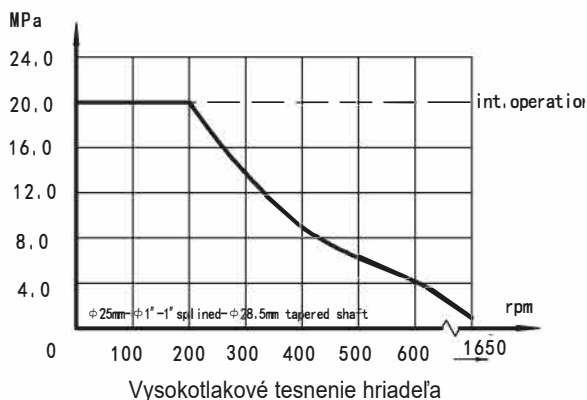
Shaft T2: Cone-shaft $\varnothing 25.4$
 Parallel key $\varnothing 25.4 \times 6.35$
 Tightening torque: $200 \pm 10 \text{ Nm}$



BMP: Hydraulický motor série BMPH



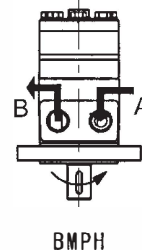
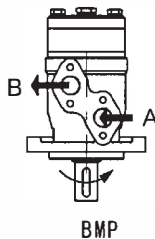
Prípustný tlak v tesnení hriadeľa



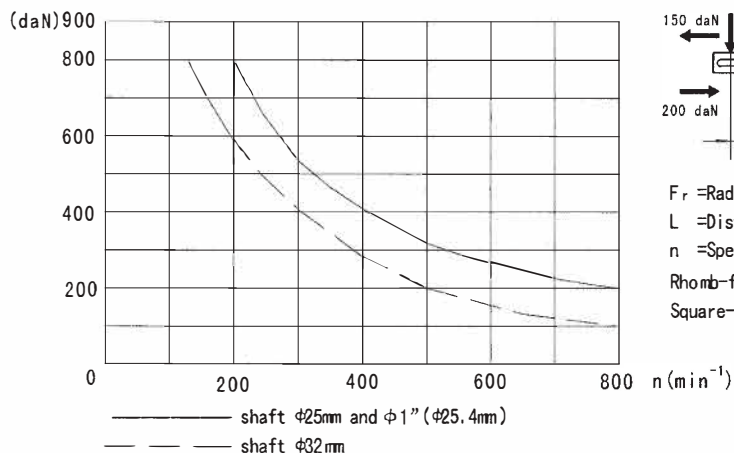
In applications without drain line, output shaft seal exceeds a bit of the pressure in the return line. When applications use the drain line, the pressure of output shaft seal equals the pressure in drain line.

Smer otáčania hriadeľa: Štandardne

When facing shaft end of motor shaft to rotate:
 Clockwise when port "A" is pressurized.
 Counter-clockwise port "B" is pressurized.



Stav radiálnej sily hriadeľa (Štandardný motor s čapovým ložiskom)



Prietok oleja vo vypúšťacom potrubí.
 V tabuľke je uvedený maximálny prietok oleja vo vypúšťacom potrubí pri spätnom tlaku nižšom ako 0,5-1 MPa.

Pokles tlaku (MPa)	Viskozita mm^2/s	Prietok oleja vo vypúšťacom potrubí (L/min.)
10	20	2.5
	35	1.8
14	20	3.5
	35	2.8

Objednávkové značenie

Pos.1	2	3	4	5	6	7	8				
Kód	Velkosť	Príruba	Výstupný hriadeľ	Porty	Smer rotácie	Farebnosť	Použitie				
BMP	36	2	2-Ø13.5 Rhomb-flange , pilot Ø82.5×8	A	D G1/2 Manifold Mount 4×M8, G1/4 M M22×1.5 Manifold Mount 4×M8, M14×1.5 S 7/8-14 O-ring manifold 4x5/16-18UNC, 7/16-20UNF P 1/2-14 NPTF Manifold 4x5/16-18UNC, 7/16-20UNF R PT(Rc)1/2 Manifold 4xM8, PT(Rc)1/4	Omit R	Standard Opposite	00 Omit B S	No paint Blue Black Silver grey	Omit N1 0 F LS	Standard Big radial force No case drain Free Running Low Speed
	50			4							
	80	E									
	100	H4	4-3/8-16 Square-flange , pilot Ø44.4×2.8	R							
	125			T							
	160	H5	4-M10 Square-flange , pilot Ø44.4×2.8	B							
	200			F							
	250	500	4-M10 Square-flange , pilot Ø44.4×2.8	FD							
	315			G							
	400			T3							
500											

Note: The shafts of B\F\FD\G\I\T\1\T3 are only suitable for flanges of 2 and 4.

Pos.1	2	3	4	5	6	7	8				
Code	Disp.	Flange	Output Shaft	Ports and Drain Port	Rotation Direction	Paint	Unusually Function				
BMPH	36	H2	2-Ø13.5 Rhomb-flange , pilot Ø82.5×2.8	K	G G1/2, G1/4 S 7/8-14 O-ring , 7/16-20UNF P 1/2-14 NPTF, 7/16-20UNF T 3/4-16 O-ring, 7/16-20UNF R PT(Rc)1/2 ,PT(Rc)1/4 B4 Ø10 O-ring manifold 4x5/16-18UNC,7/16-20UNF B5 Ø10 O-ring manifold 4xM8, 7/16-20UNF	Omit R	Standard Opposite	00 Omit B S	No paint Blue Black Silver grey	Omit N1 0 F LS	Standard Big radial force No case drain Free Running Low Speed
	50			H6							
	80	A									
	100	H4	4-3/8-16 Square-flange , pilot Ø44.4×2.8	R							
	125			H							
	160	H5	4-M10 Square-flange , pilot Ø44.4×2.8	H1							
	200			D							
	250	500	4-M10 Square-flange , pilot Ø44.4×2.8	I							
	315			P							
	400			J							
500											

Note: When the table is used, please fill the code of left rows in dash area and give us, which the code information is consists of construction, displacement, mounting flange, output shaft and ports. If the specification is not in the table or you have specific requirements, please contact us.